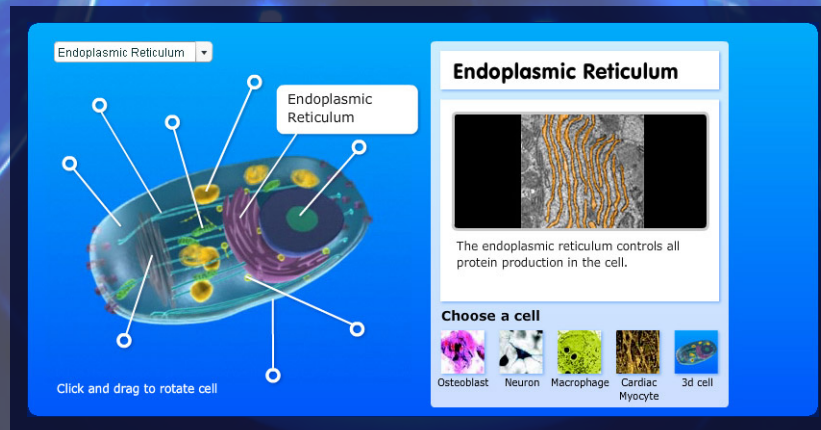


# CELL STRUCTURE



## Explore a Cell

[www.centreofthecell.org/interactives/exploreacell](http://www.centreofthecell.org/interactives/exploreacell)

Many of the games you will have seen during your Centre of the Cell visit are available on our website: [www.centreofthecell.org](http://www.centreofthecell.org).

These can all be played on an interactive whiteboard, and are therefore ideal resources for following-up your visit to Centre of the Cell in the classroom.

Using *Explore a Cell* in school:

- Go to the Centre of the Cell home page and click the 'games' button
- Open *Explore a Cell* and project it onto the whiteboard
- Use the starting cell to demonstrate the different organelles. Explain the roles of each one.
- EITHER: Ask the class to pick a specialised cell from the list OR pick the cell that fits best with your preferred topic
- Without selecting the cell in question, ask the class to discuss the ways in which the cell structure will differ for different cells (ie, heart muscle cells have large mitochondria because energy production must be continuous and life-long).
- Click on the picture of the cell in question to reveal its structural idiosyncracies.